

OUR FOUNDATION

MISSION

Uniting Local Resources to Help Our Neighbors

VISION

The United Way of Marion County is the community leader and trusted partner that proactively seeks solutions to change people's lives, and brings the diverse aspects of our community together to meet current health and human service needs and proactively addresses future issues.

FOCUS AREAS



STRATEGIES

GIVE. ADVOCATE. VOLUNTEER.

OUR GUIDING PRINCIPLES

Excellence and Integrity
Stewardship
Leadership and Collaboration
Results
Caring

2015-2016 BOARD OF DIRECTORS

Jim Alsobrook	Retired
Ires Bethea	Retired
David Brady	Time Customer Service
Bill D'Aiuto	Department of Children and Families
Randy Ewers	Class 1
Lola Gonzales	Accurate Background Check
Chief Greg Graham	Ocala Police Department
Michael Greiner	Merrill Lynch
Dr. Nathan Grossman	Retired
Dr. Jim Henningsen	College of Central Florida
Jack Hillesland, Chair	Retired
Kathy Judkins	Sumter Electric Cooperative
Steven Lee	Purvis-Gray and Company
Dirk Leeward	Ocala4Sale
Susan Leitgeb	
Brittney Marthaller	Ocala Health
Randy McVay	Ocala Health
Bob Moore	Munroe Regional Medical Center
Pat Moses	
Brad Rogers	Ocala Star-Banner
Phil Schuck	Catalyst CRE
George Tomin	
Don Umbleby	Publix



United Way of Marion County



LIVE UNITED

by being informed, involved and aware.



www.UWMC.org

352-732-9696

[facebook.com/UWMarionCounty](https://www.facebook.com/UWMarionCounty)

twitter.com/UWMarionCounty

[instagram.com/UWMarionCounty](https://www.instagram.com/UWMarionCounty)



2015-2016

REPORT TO THE COMMUNITY

A Summary of how the United Way of Marion County Impacts our Community

GIVE

ADVOCATE

INVESTMENTS

TOTAL RAISED \$1,875,028

WHAT **1** CAN DO

2015-2016 FINANCIAL POSITION

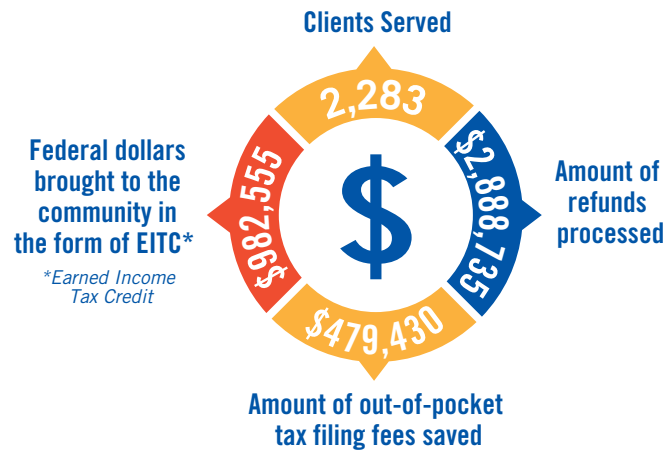
For the 12 month period ending June 30, 2016

ASSETS	2015-2016	2014-2015
Cash & Investments	\$1,379,271	\$1,667,384
United Way Endowment*	\$3,471,118	\$3,377,241
Pledges Receivable (less allowance for uncollectables)	\$559,663	\$545,430
Accounts Receivable & Other Assets	\$20,261	\$21,242
Land, Building, Equipment (Net)	\$356,725	\$365,886
Beneficial Interests in Trusts	\$34,639	\$46,709
Total Assets	\$5,821,677	\$6,023,892
LIABILITIES & NET ASSETS		
Liabilities		
Accounts Payable	\$29,645	\$11,894
Accrued Payables	\$34,127	\$25,006
Contributor Choice Payable (Fall Campaign)	\$136,808	\$184,271
Total Liabilities	\$200,580	\$221,171
NET ASSETS		
Undesignated	\$678,412	\$609,342
Board Designated	\$2,721,183	\$3,012,487
Temporarily Restricted (Campaigns)	\$816,290	\$768,808
Permanently Restricted	\$1,405,212	\$1,412,084
Total Net Assets	\$5,621,097	\$5,802,721
Total Liabilities & Net Assets	\$5,821,677	\$6,023,892

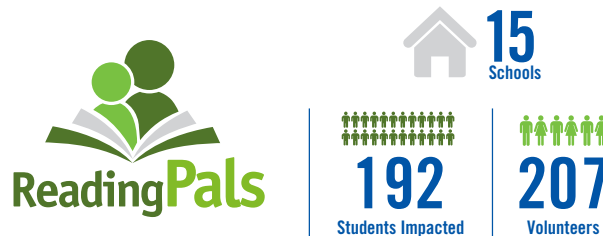
Additional support and revenue generated from FEMA (Federal Emergency Food & Shelter Program), Energy Assistance Programs, Volunteer Time, Gifts in Kind, and Community Service total:

*Interest from Endowment Fund is reinvested in community Based upon United Way's Audit for the fiscal years ending June 30, 2015 and June 30, 2016 as audited by Crippen & Co, CPAs. The audited financial statements and Form 990 are available for review at the United Way office.

VITA VOLUNTEER INCOME TAX ASSISTANCE



EDUCATION IMPACT



CURRICULUM BOOKS



23 Human Service Programs were funded in Marion County

58,494 people received services

% SPENT IN EACH AREA:



OTHER HUMAN SERVICE INVESTMENTS:



VOLUNTEER:

18,631 Total Volunteer Hours = \$430,798
The value of an hour of a volunteer time is calculated at \$23.07

\$9,343 UWMC Board	405 hours
\$261,539 ReadingPals	11,336 hours
\$66,975 VITA Volunteers	2,903 hours
\$13,968 Community Impact	605 hours
\$19,743 Youth United Way	838 hours
\$ 2,226 Campaign	97 hours
\$3,114.45 Women's Leadership	135 hours
\$51,135 Office volunteers	2,216 hours